

# Crowcon Technical Note

**Document Reference:** GEN104 (Issue 2)  
**Document applies to:** Portables PC Software  
**Release Date:** 15/01/2021  
**Subject:** Installation with latest 'ini' files

This technical note describes the procedure for installing Portables PC for use with Gasman, T3, Tetra, Triple Plus+ and Detective+ instruments, as well as the installation of the additional 'ini' files required for use with the very latest product firmware.

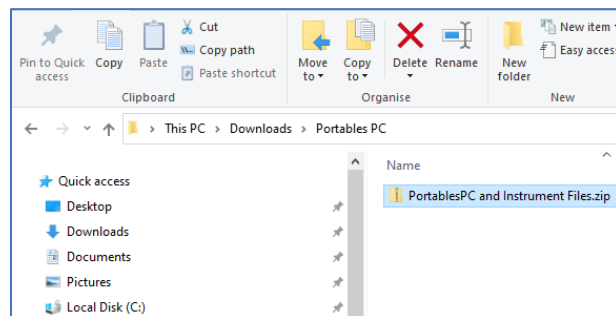
## Portables PC Installation / Instrument 'ini' files download

A link to download the Portables PC software can be obtained for trained and/or authorised personnel by contacting [technicalsupport@crowcon.com](mailto:technicalsupport@crowcon.com).

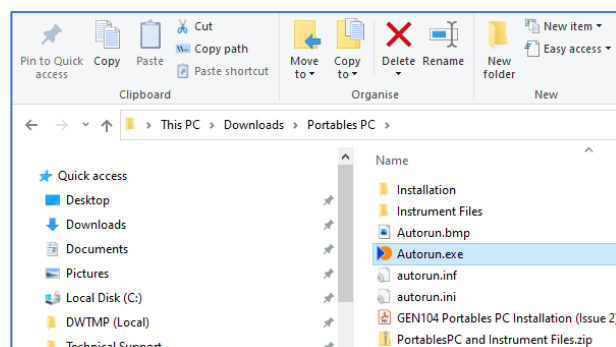
(Installing the **Portables PC Software**, and the **Instrument 'ini' files** will need administrator access to the PC).

Click the software link supplied then choose 'Save As' and copy the 'Zip' file to a new folder on the PC called "Portables PC", the file will then download:

- Right-click on the downloaded file and then "**Extract**" the content to the chosen folder.



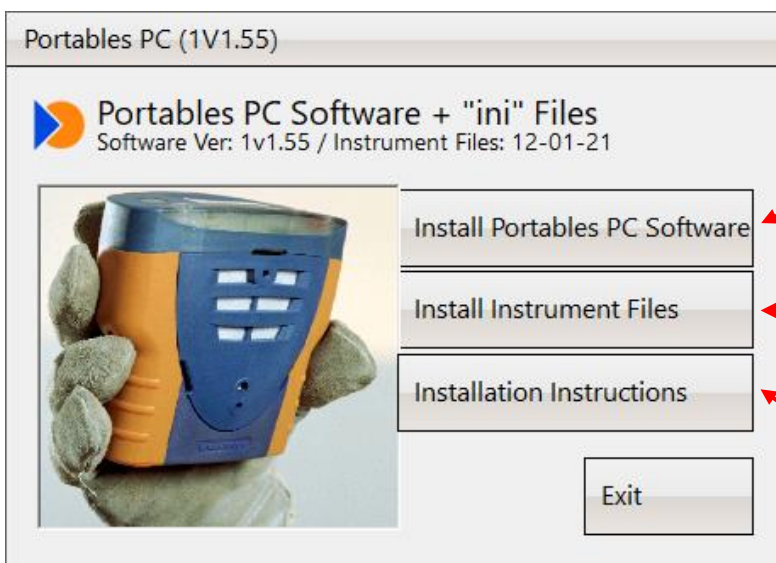
- Navigate to the new folder where the extracted files were saved and 'Double-Click' **Autorun.exe** (the file with the ) which will open the Installation Menu.



# Crowcon Technical Note

## Portables PC Installation Menu

- Select the option from the installation menu to run the required installation  
(To update the Instrument files where Portables PC (1v1.55) is already installed, you do not need to install Portables PC again, just install the instrument files).



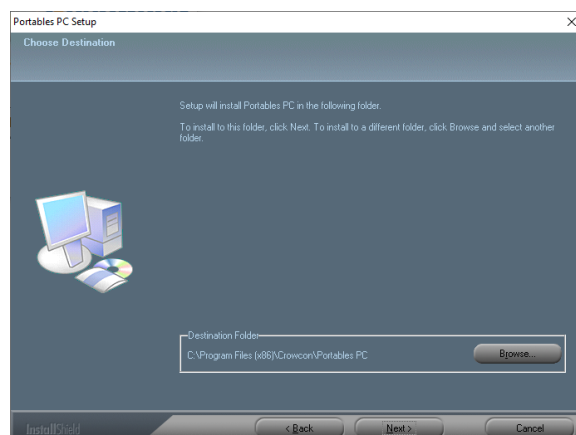
**Install PortablesPC software**

**Install Instrument INI files**  
(required to communicate with latest firmware versions)

**Open a copy of this Technical Note**

## Install Portables PC Software (administrator access will be required)

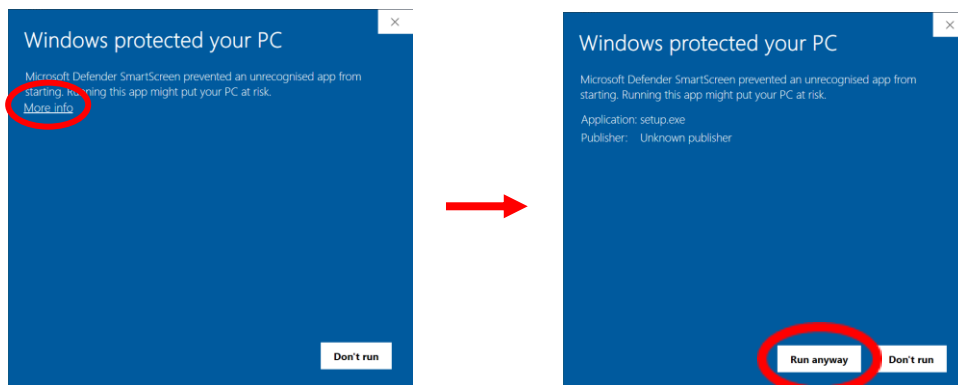
- Click the “**Install Portables PC Software**” button to install the software.  
When asked:
  - accept the default folder path
  - leave the OEM field blank and continue through the install wizard to completion.



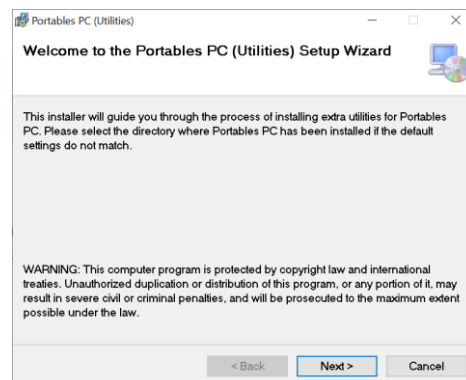
# Crowcon Technical Note

## Install Instrument ('ini') Files (administrator access will be required)

- Click the **"Install Instrument 'ini' Files"** button from the menu and follow the install 'wizard':
  - If you see this Microsoft Defender message (or similar security warning), select **"More Info"** and then click on **"Run Anyway"** to start the installer.



- The install 'wizard' should then start:



- Make sure that the destination folder is the same folder where Portables PC was installed (*the default location will be correct unless Portables PC was installed in a different location*).

